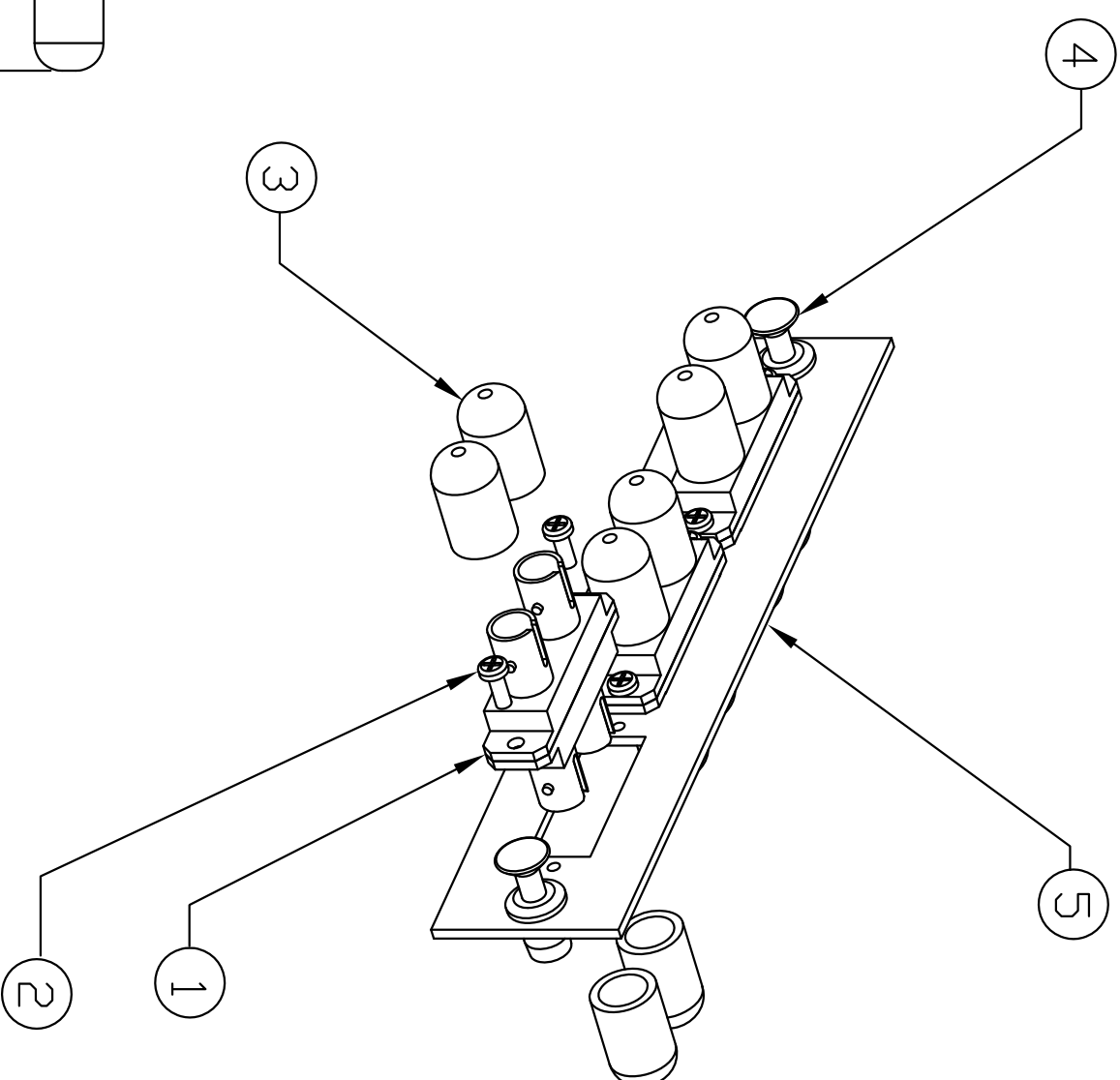
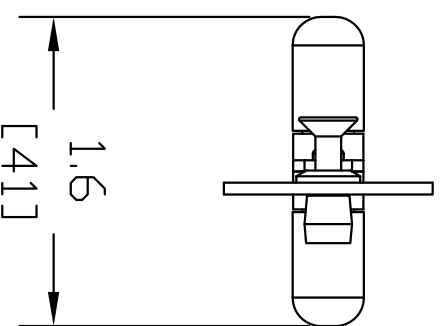
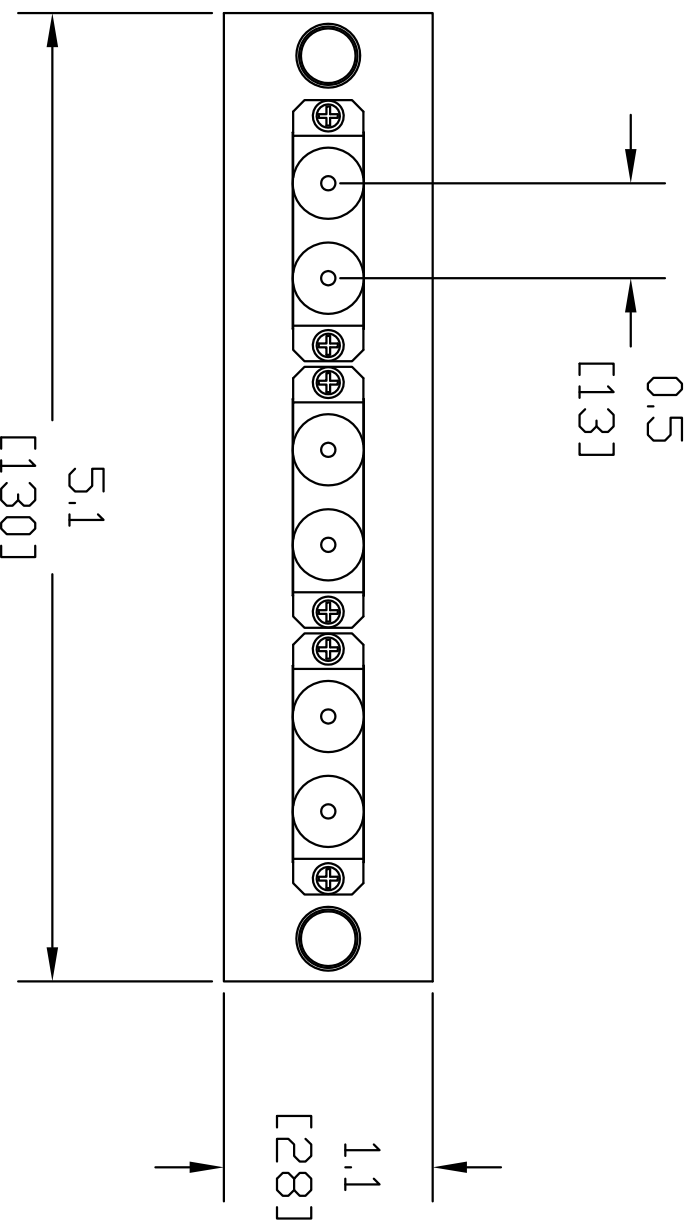
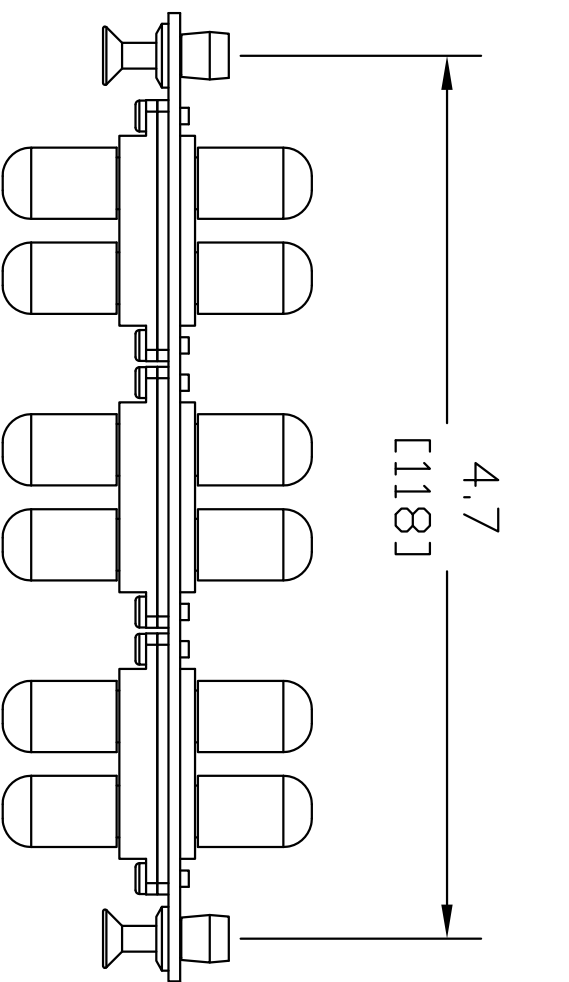


ITEM NO.	DESCRIPTION	QTY.
1	ADAPTER, ST DUPLEX	3
2	SCREW, ADAPTER MOUNTING	6
3	DUST CAP, ST	12
4	NYLATCH PUSH FASTENER	2
5	ADAPTER PANEL	1

CATALOG NUMBER	DESCRIPTION	SPLIT SLEEVE MATERIAL	ADAPTER COLOR
FSPSTD3	6 PORT FSP PANEL WITH ST DUPLEX ADAPTERS	PHOS-BRONZE	BLUE
FSPSTDS3	6 PORT FSP PANEL WITH ST DUPLEX ADAPTERS	ZIRCONIA	BLUE



LOADED FSP PANEL

- NOTES:
1. SUPPLIED WITH PUSH/PULL FASTENERS FOR EASY INSTALLATION/REMOVAL.
 2. PANELS FIT INTO HUBBELL WALL MOUNT AND RACK MOUNT CABINETS.
 3. BLACK ELECTROSTATICALLY APPLIED POWDER COAT.
 4. ADAPTERS SUPPLIED WITH DUST CAPS INSTALLED
 5. HIGH QUALITY ALIGNMENT SLEEVES – SEE TABLE FOR MATERIAL. ZIRCONIA COMPATIBLE WITH BOTH SINGLEMODE AND MULTIMODE FIBER. PHOSPHOR BRONZE COMPATIBLE WITH MULTIMODE FIBER ONLY.
 6. SPECIFICATIONS SUBJECT TO CHANGE WITHOUT NOTICE.

REV.	ECN	DATE	DESCRIPTION	CHG BY	APPD BY
C	17038	3/21/11	UPDATED NOTE #5	CG	

Created on AUTOCAD

DIMENSIONING AND TOLERANCE PER ANSI Y14.5M-1982 UNLESS OTHERWISE SPECIFIED, DIMENSIONS ARE IN INCHES (MM). TOLERANCES: .XX = ±.01 (.25) .XXX = ±.005 (.127) .XXXX = ±.0025 (.0635) ANGLE TOL #1°

IN ACCEPTING OUR DRAWINGS, BLUEPRINTS, OR SUPPORTING DOCUMENTATION FOR QUOTATION OR OTHER PURPOSES, YOU AGREE NOT TO DISCLOSE TO OTHERS THE IDEAS, INFORMATION, OR DESIGNS SHOWN HEREIN, AND THAT YOU WILL MAKE NO USE OF SAME WITHOUT PERMISSION

PROJECT REFERENCE: 07-001

MATERIAL: SEE NOTES

DRAWN BY: C. DUSSAULT 2/16/07

CHECKED BY:

APPROVED BY:

TITLE: ADAPTER PANEL ASSEMBLY 6 PORT FSP PANEL WITH ST DUPLEX ADAPTERS

HUBBELL
Hubbell Premise Wiring
HUBBELL INCORPORATED (Delaware)
14 Lord's Hill Road, Stonington, Connecticut 06378

SIZE: C

DRAWING NO.: HWS12511C

SCALE: 1/1

SHEET 1 OF 1

REV. C